



# DESIGN MATTERS

ENRICHING THE HUMAN EXPERIENCE THROUGH INTERIOR DESIGN

WINTER  
2010

100 10th Street, NE  
Suite 201  
Charlottesville, VA 22902

PI PYE INTERIORS

## LEED for Commercial Interiors

Pye Interiors is pleased to announce the completion of the UVA Hand Center, which is one of the first projects in the UVA Health System to pursue LEED for Commercial Interiors certification. LEED is the green benchmark of the interior design community. It is a recognized system for certifying high-performance green interiors that are healthy, productive places to work; are less costly to operate and maintain; and have a reduced environmental footprint.

Source: U.S. Green Building Council

## Healthcare UVA Health System Opens New Patient Care Centers

### Healthy & Green

Two new patient care centers, Spine and Hand, are the first projects in the UVA Health System to pursue LEED for Commercial Interiors certification. They represent the healthiest and most energy efficient patient environments that the UVA Health System has completed to date.

The Spine and Hand Centers are designed around a multi-faceted, comprehensive approach to care that streamlines delivery of service to patients. The Hand Center, which opened in mid-January, brings together practitioners from orthopaedic, plastic surgery, and physical therapy. The Spine Center, which will open in March, brings practitioners from neurosurgery, orthopaedic, neurology and physical therapy together into one location. Pain management services are also provided within the Spine Center. A four room radiology suite (x-ray) serves both centers.



Accent paint colors and upholstery fabrics identify the separate care centers. Wood-look flooring provides visual warmth while maintaining a high-performance hard surface material.

The design team for the 22,000 square foot project is Daggett + Grigg in coordination with Pye Interiors. Linda Pye, the interior design lead, says "Our firm was involved very early in the design process. Strategy meetings were held from the very beginning so we could determine which LEED points were achievable. The team met very rigorous specifications from the U.S. Green Building Council. For example, we specified low VOC paints and finishes for pure indoor air quality as well as materials with high levels of recycled and recyclable content." The flooring is the interior finish's largest contributing green element. Linoleum is a rapidly renewable resource, and Pye Interiors introduced four colors



Textured glass, soft accent lighting, and a change in flooring material call attention to check-in areas.

## In The Works...

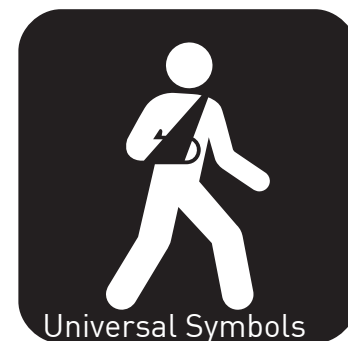
The **Culpeper Police Department** is a nationally accredited, full service law enforcement agency. For the last 40 years, while the community it serves has grown significantly, the department has been operating out of a cramped building that had received little to no aesthetic or functional upgrades. Now, with nearly 20,000 SF, the department's newly renovated building will nearly triple their existing square footage and will provide adequate space to meet the police department's program requirements.

The new headquarters facility in a repurposed manufacturing building features a welcoming public lobby with large graphic panels with photos of the Culpeper area. In addition to the lobby, the public section of the building includes a crime-reporting area and an on-site training room that can double as a community room for citizens in the evenings. The majority of the building is a secured space with full lockdown capabilities. This private operations area includes an investigations suite, special operations suite and a patrol suite. Each suite was designed to maximize work flow and storage. Prisoner processing, evidence preparation and storage are also included.

Police Chief Scott Barlow looks forward to the opening of the new facility, saying "it will portray an image of security and professionalism to the community while providing a significantly enhanced environment resulting in better employee morale and improved work flow." Linda Pye, the project's lead designer, says "While it's a very straightforward design that was accomplished on a tight budget, we were able to bring energy and life to an institutional space through a



What's Up?



Universal Symbols



Fostering Collaboration



Healthy & Green

## ON THE BOARDS

### Higher Education

- University of Virginia, Alderman Library at Charlottesville, VA
- Darden School of Business at the University of Virginia, Charlottesville, VA
- Washington & Lee University, Old Lexington Courthouse, Lexington, VA

### Public | Municipal

- Augusta County Library, Fishersville, VA
- Culpeper Police Department, Culpeper, VA
- Foster Falls Hotel, Virginia State Parks, Foster Falls, VA

### Mixed Use

- The Gleason, Charlottesville, VA

### Healthcare | Medical

- Hand, Radiology, Spine & Injection Clinics - Fontaine Research Park, University of Virginia Health System, Charlottesville, VA
- Surgery Center of Lynchburg, Lynchburg, VA
- University of Virginia Hospital 7th & 8th Floor Renovations, Charlottesville, VA

### Corporate | Office

- Ashbury International Corporate Offices, Charlottesville, VA
- TMO Global, Corporate Office, Charlottesville, VA
- Court Square Ventures, Corporate Offices, Charlottesville, VA
- Crossroads Equity, Corporate Offices, Charlottesville, VA



located along exterior walls. "The design of the centers is consistent in terms of general approach and theme, but we added a different accent color in each of the three suites for individualization," says Pye. "In all the spaces, we combined cool and warm tones to evoke nature and a place of healing." The artwork selection reinforces the natural theme.

**The curved floor pattern adds movement and interest to the clinic corridors.**

into the floor pattern for visual interest. Pye states, "The rhythm of the floor pattern imitates nature and softens the hard angles of the walls with curves and color." Linoleum is acoustically quiet and it has the added benefit of being more comfortable for the staff, who spend long periods of time on their feet.

The space layout maximizes the use of natural light, with patient treatment rooms

Fine art photography, selected around the theme of trees, was procured from local artists.

Located in Charlottesville, the Hand and Spine clinics are co-located on the third floor of the existing Ray C. Hunt Clinical Office Building in Fontaine Research Park.

In the past several decades, our society has changed from a factory based economy to a knowledge based economy. This shift focuses our attention on the role of collaboration in the workplace. Collaboration is defined, according to Steelcase, as the process whereby good ideas build on each other and important information is shared, tested, altered, retested and solidified. A recent study by Steelcase demonstrates that innovation increases by 15% in a workplace that supports brainstorming, peer critiques and the free exchange of ideas.

An important question to ask is, "who collaborates"? People who work in creative, knowledge-based and problem-solving fields are the most likely candidates. Collaboration takes



place between professors and students in a university setting, between doctors and nurses in a hospital or clinic, and between colleagues and clients in an office. Collaboration also takes place between generations.

When designers work with a client to create a space that fosters the exchange of information, it is important to provide a mixture of private workspace (for more concentrated work) and a variety of open spaces to encourage people from different generations to work together. For the older generations, (i.e. Baby Boomers), collaboration often takes place in private offices and board rooms, whereas younger generations (i.e. Generation X) tend to gravitate towards shared spaces, like common areas, a café or a gathering space in a corridor. It is also imperative to provide adequate furnishings and equipment for the type of work to be done.

Kimball, another major contract furniture manufacturer, researched how people respond to furniture that encourages collaboration and developed a new system called Hum. Hum is an open plan concept designed to allow users to

**A cafe space designed for Hauser Homes doubles as meeting space for large staff meetings or informal two-person discussions.**



**Hum system with 'See Me' screens and shelves that move piles up off of the work surface.**

move from individual focused work to collaborative tasks instantly through the use of the "See Me" screen. The system uses low panel heights, built-in storage space and screens that allow users to see others and be seen. The system helps filter distractions for better focus and allows for easy impromptu meetings between colleagues.

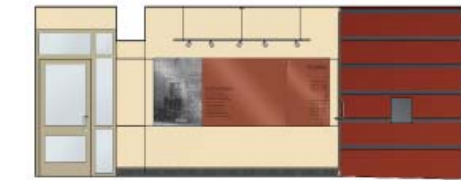
It is our job as interior designers to match your space and its attributes to the work and activities it needs to support. There is an ever-changing array of collaborative interior environments that can help your staff work more efficiently and productively. Ask us how we can help you foster collaboration in your workplace - the results can be impressive.

- Sheila Hoopmann

In The Works...

coordinated selection of furniture, color, and lighting." The Police Department will move into to their newly renovated space on June 1, 2010. The architect is Dominion Development Resources of Charlottesville, Virginia.

**The Gleason** is Charlottesville's newest mixed-use downtown development. Developed by Octagon Partners and designed by Daggett + Grigg Architects, the project is now under construction and



should be completed this March.

Located just two blocks from the city's celebrated pedestrian mall, the Gleason is five stories and is said to be one of the biggest non-UVA structures in Charlottesville. The urban lifestyle project is approximately 160,000 square feet and offers 44 upscale residential condominiums, two full floors of Class A commercial office space, and ground level boutique retail. Pye Interiors is providing interior design services for the common area spaces and several of the office tenants who have leased space thus far including TMO Global, Court Square Ventures, and Crossroads Equity Partners. "Sales have been brisk, despite the economy," reports Mark Mascotte of Octagon Partners. For more information, visit [www.thegleason.com](http://www.thegleason.com)



Healthcare

Universal Symbols Are Effective in Hospitals

We are all familiar with the use of universal symbols in airports, but introducing them into hospitals is a relatively new concept that is gaining attention. The 2000 Census revealed that more than 44 million Americans over the age of five speak a language other than English at home. These changing demographics call for the use of symbol-based wayfinding to help visitors navigate healthcare facilities.

Hospitals are often sprawling complexes with many functions on one floor. People with limited English language skills can be overwhelmed and confused when they try to find their way through unfamiliar health care environments. Many directional signs are needed to direct visitors in finding their destination. Universal symbols are more easily noticed and understood than multilingual text-based signs. They are also simpler to integrate with the ADA Guidelines since their bold, graphic nature makes them more user-friendly for the visually impaired. When used in combination with numbers

and letters, universal symbols can be equally successful in simple identification signs or in complex wayfinding systems.

In 2003, the development of a 28 symbol system was funded by the National Program Office of Hablamos Juntos, an organization whose mission is to improve communication between health care providers and their patients with limited English proficiency. The idea of symbols for health care signage came from the subway system in Mexico City which uses cultural icons to identify destinations, making the city's subway system accessible to tourists and those unable to read. The 28 Universal Symbols were developed by a design team of leading health facility designers and were tested across four language groups: English, Spanish, Indo-European, and Asian. Once developed, the symbols were tested in the wayfinding systems of four hospitals across the



Ambulance



Cardiology



Immunizations

country. The results were impressive:

- More than 75% of people tested felt the symbols were more effective than text. The symbols were easier to see and understand, and preferred even by those who could read English.
- During testing, participants walked one foot per second faster to find their destination when guided by symbols than when guided by word signs.
- More than 80% of the hospital staff interviewed felt that symbols would ease the process of giving directions to patients and visitors.

Universal Health Care Symbols are an exciting design innovation that can be utilized by designers to assist all people to feel more confident and comfortable in a health care facility. The full potential of this symbol-based system will be determined through implementation and time.

- Linda Pye

What's Up?

Introducing media:scape® by Steelcase

Have you ever noticed those inevitable wires and cables running across a conference room floor? Have you ever been frustrated by a meeting table that only allows one person at a time to present? Tripping over cords is a hassle and people work in teams, not alone. Steelcase has a solution that caught our eye - media:scape.

Introduced in 2009, media:scape seamlessly melds furniture and technology to create a collaborative solution that helps people connect to people and to the information held in their computers. The unique approach of bringing flat-screen technology to the meeting table revolutionizes collaborative meeting spaces. Those ever-present pesky wires are concealed in the 'totem' that acts as a flat-screen support and as a barrier to provide some privacy. It's as easy as a touch of a button on a 'puck' to switch

between multiple laptops, quickly sharing ideas with a team. media:scape is available in three table heights to accommodate different postures and presentation styles.

Contact Pye Interiors to see installations of this product and experience the integration first-hand.

- Susan Cash



**media:scape with flat-screen mounted to totem, lounge-height table with integrated power, and i2i lounge seating.**